

# Oil Filter Service Reference

## Conventional Oil Filters



### Filter Cartridge Replacement:

The filter cartridge should be replaced at the beginning of each heating season. It is recommended to change the oil filter before servicing the oil burner.

1. Turn off electricity to burner and close shut-off valve in fuel line.
2. Place E-Z Change bucket under filter. Loosen top center bolt **ONLY** and remove filter bowl.
3. Place used filter cartridge in E-Z Change bucket, so oil will drain. (Figure 2).
4. Inspect filter bowl closely for visible corrosion, pitting, or coating damage as illustrated in figure 3, 4, and 5.

**Figure 3** showing exterior coating damage, replace filter bowl.

**Figure 4** showing rust and pitting, replace filter bowl.

**Figure 5** showing pin size hole in bowl, replace filter bowl.

When you have identified filter bowl degradation, be certain to **replace with the General Epoxy G Filter Bowl Upgrade Kit**. The Epoxy G Filter Bowl is coated with thick durable epoxy on the inside and out, standard with the 4EVERLoc bottom bolt design, and features the BIOGasket™

5. If filter bowl is free from degradation, proceed to clean filter bowl thoroughly. You may use solvent if necessary.
6. Dry gasket seat in filter bowl.
7. Place new General or Unifilter cartridge in filter bowl and install the new bowl gasket and center bolt gaskets provided. Do not lubricate gaskets.
8. Reassemble bowl to filter head and tighten center bolt. Torque center bolt to 80-120 inch-pounds.
9. Bleed air as recommended by pump manufacturer.

### Bleeding One-Pipe Systems:

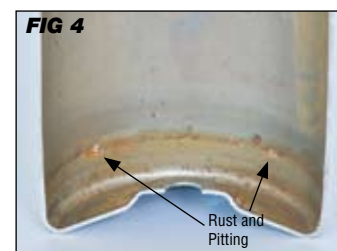
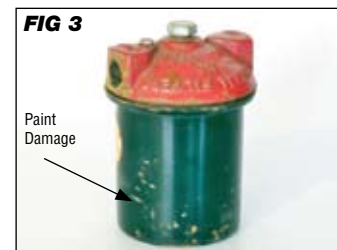
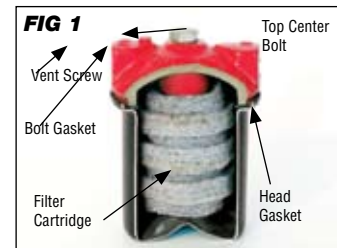
1. Close fuel shut-off valve.
2. Remove filter vent screw.
3. Replace vent screw with new gasket.
4. Open fuel shut-off briefly until oil shows at vent port.
5. Tighten vent screw then open shut-off valve.
6. Loosen bleed port on fuel unit. Start burner and bleed system as recommended by pump manufacturer.

**Important:** Priming may be assisted by filling filter bowl with clean fuel oil. One-pipe installations must be absolutely air tight or leaks and/or loss of prime may result. Bleed system for 15 seconds after the last air is seen from the pump's bleed port to be certain lines are air-free.

### Bleeding Two-Pipe System:

Bleeding two-pipe systems is often not necessary. Priming may be assisted by filling filter bowl with clean fuel oil.

**RUN OIL BURNER AND CHECK FOR LEAKS. IF OIL TANK IS EMPTY, RUN BURNER AND RE-INSPECT AFTER TANK IS FIRST FILLED. KEEP RECORDS OF SERVICES AND INSPECTIONS.**



Toll Free (866) 476-5101  
GENERALOilFilters.com  
GARBERFilters.com

General Filters, Inc.  
43800 Grand River Avenue  
Novi, Michigan 48375  
GENERALFilters.com

CGF PRODUCTS  
Canadian General Filters, Ltd.  
400 Midwest Road  
Toronto, Ontario M1P3A9  
cgfproducts.com

