

SECTION

8A

Remote Control Systems With 898 Meters

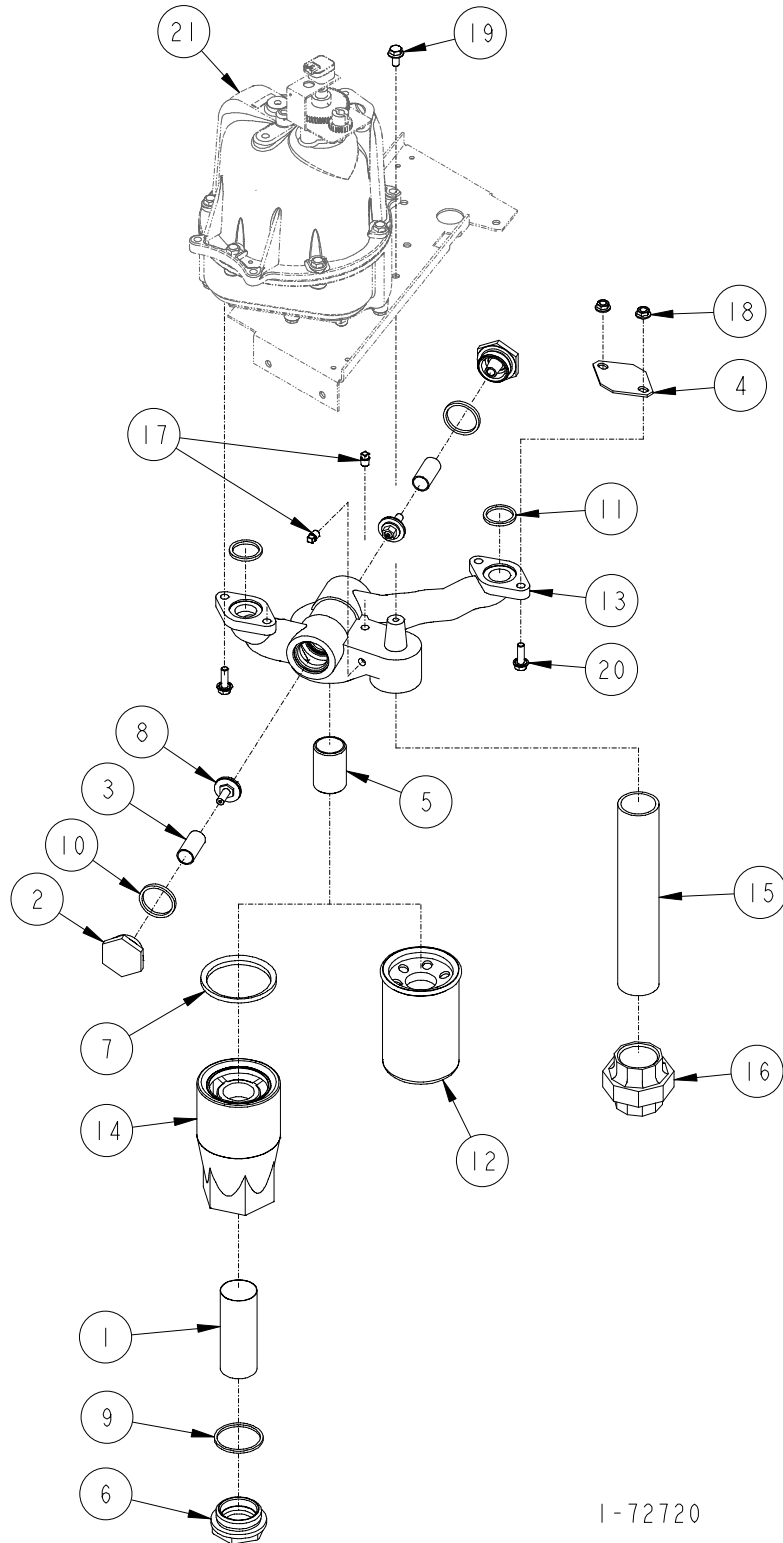
Page Number

Remote Control System

H311C, H312C, H411C, H412C, H413C, H414C, H311D, H312D, H411D, H412D, H413D & H414D	8A-2, 8A-3
H322C, H324C, H422C, H424C, H426C, H428C, H322D, H324D, H422D, H424D, H426D & H428D	8A-4, 8A-5

REMOTE CONTROL SYSTEM

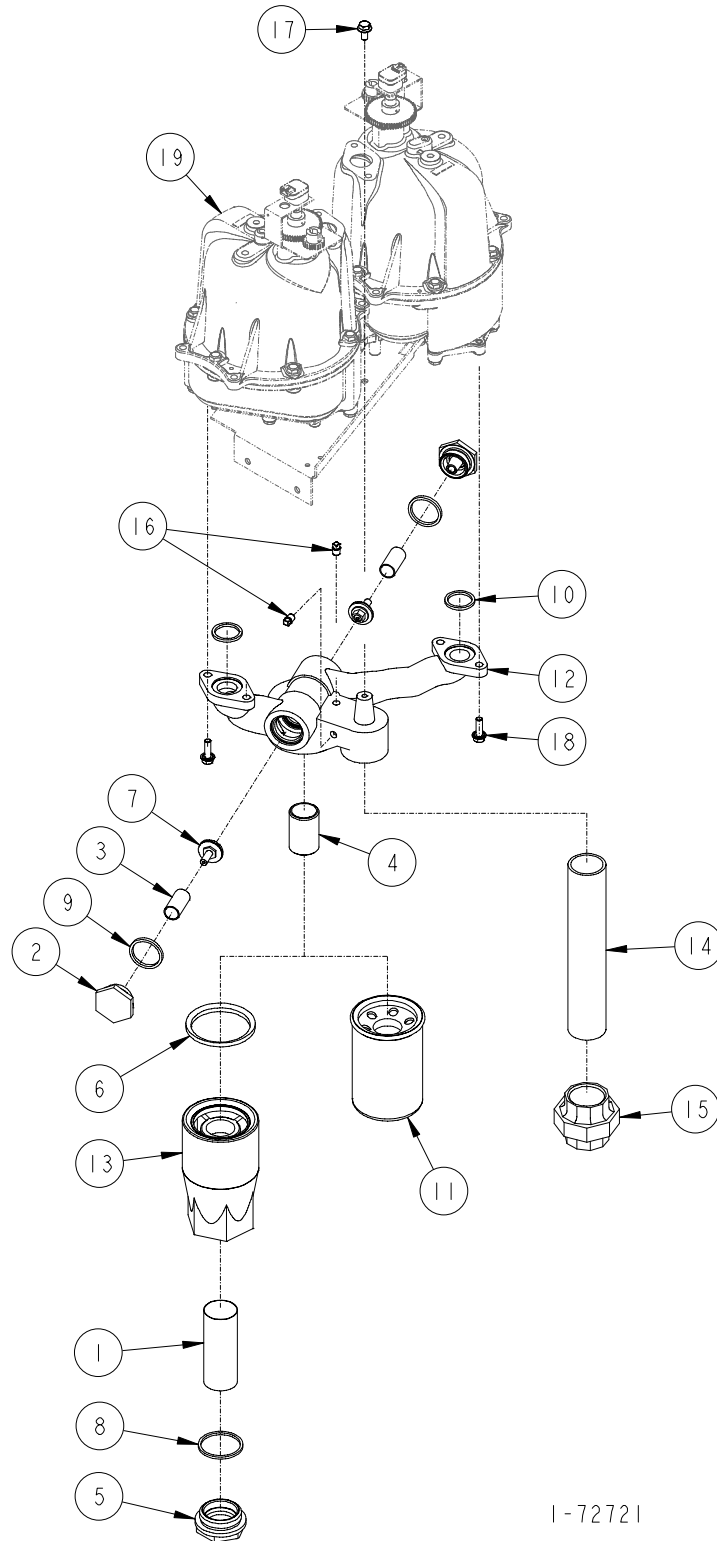
(H311C, H312C, H411C, H412C, H413C & H414C)
(H311D, H312D, H411D, H412D, H413D & H414D)



1-72720

REMOTE CONTROL SYSTEM

(H322C, H324C, H422C, H424C, H426C & H428C)
(H322D, H324D, H422D, H424D, H426D & H428D)



1-72721

REMOTE CONTROL SYSTEM
(H322C, H324C, H422C, H424C, H426C & H428C)
(H322D, H324D, H422D, H424D, H426D & H428D)

ITEM PART

NO. NO. DESCRIPTION

1	<u>Strainer Screen</u>	
	1-115075	Gas
	2-115075	Diesel
2	1-120731	Check Valve Cap
3	1-120733	Poppet Spring
4	1-232801	Nipple
5	1-232289	Strainer Cap
6	1-232873	Gasket
7	1-321382	Pressure Relief Valve Assembly (not used in Canada)
8	2-313235	Gasket
9	6-313235	Gasket
10	13-313235	Gasket
11	<u>Filter</u>	
	1-320262	Standard
	2-320262	Alcohol
	3-320262	Gas, Diesel
12	<u>Inlet Manifold</u>	
	1-422025	Standard
	2-422025	Automatic Temperature Control (Canada)
13	1-422119	Strainer Body
14	130-50510	Pipe 1-1/2" x 10" Long
15	27-51780	1-1/2" Female Union
16	01-51911	1/8-27 Pipe Plug (Automatic Temperature Control Only)
17	35-55132	5/16-18 x 5/8" Long M-F Flange Whiz Lock Screw
18	38-55132	5/16-18 x 1" Long M-F Flange Whiz Lock Screw
19	<u>For parts call out of Meter & Transfer Body Assembly see 72727.</u>	

Reference for Tokheim internal use only:

320253 Filter/Check/Inlet Assembly

1-72721